

## PSI 48NPFC REMOTE MONITORING UNIT (RMU) FOR PSI RACKMOUNT BATERIES

### #48NPFC-RMU-1.1

Integrates data of 8 rackmount batteries.	Convenient local web interface and graphics	SNMP v2 real time monitoring.
1RU 19 inch rack compatible	SMTP email client for sending alarms.	Ethernet connection to local networks
Easy to use interface and setup	Sensor input for door sensors.	Field updateable.
Compatible with all PSI rack-mount batteries	48V power input from power shelf output, or batteries	Displays Battery Management System (BMS) data



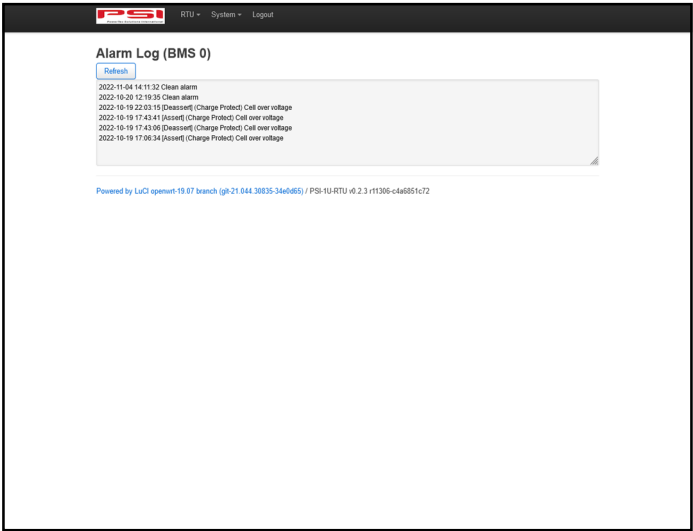
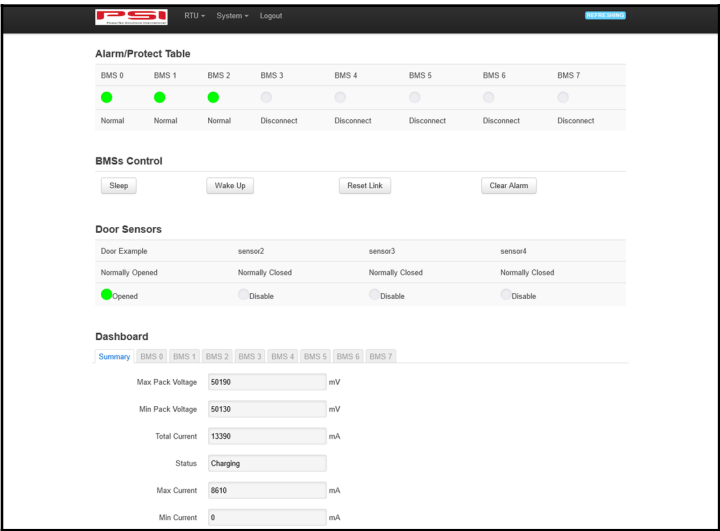
PSI's Remote Monitoring Unit (RMU) provides a way for customers to monitor rackmount batteries in remote locations. It can be securely installed behind firewalls and accesses to view battery status. There are two ways to monitor. First, users can simply look at the webpage hosted by the RMU alone. An email client can be set up to alert users of alarms via an email alert. Secondly, SNMP allows users monitoring equipment with network management software to monitor their batteries remotely. No matter what method you use, you can rest better knowing the status of your batteries without a trip to remote locations!

# PSI 48NPFC REMOTE MONITORING UNIT (RMU) FOR PSI RACKMOUNT BATERIES

## #48NPFC-RMU-1.1



RMU Front Panel



RMU dashboard and alarm log screen shot.

## FEATURES AND SPECIFICATIONS

Size:	5.6" X 1.8" X 4.7" (141mm X 45.45mm X 120mm) 1RU 19" rack compatible.
Weight:	4.4 lbs (2 Kg)
Power:	0.7A @ 48V (Max) (6.4mmX2.0mm coaxial connector)
SNMP Version:	2
Sensor Type:	4 Normally open(NO)/Normally Closed (NC) switch contact.
Battery Communications:	RS485
Network Communications:	Ethernet/DHCP or static